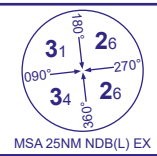
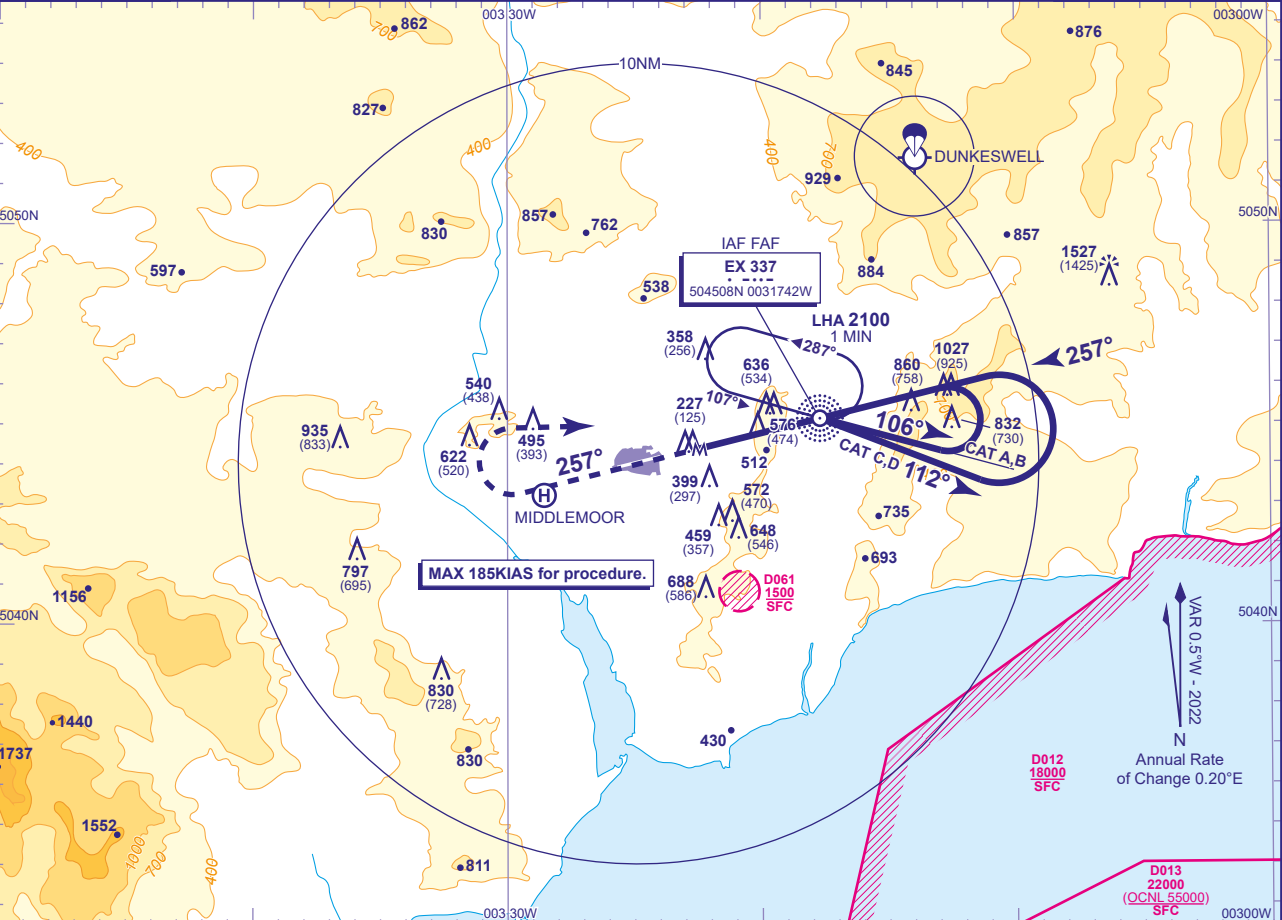


INSTRUMENT APPROACH CHART - ICAO

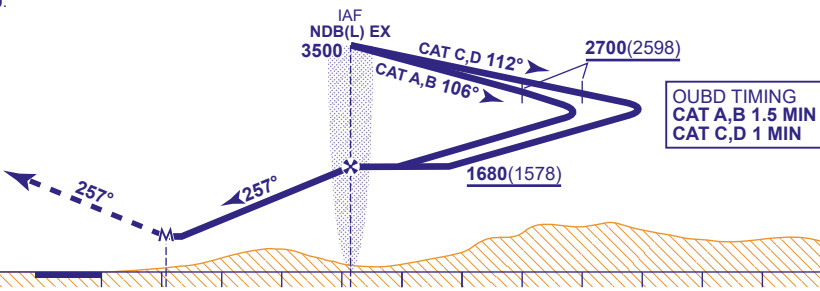
EXETER
NDB(L)
RWY 26
(ACFT CAT A,B,C,D)



APP	128.980	EXETER APPROACH	AD ELEVATION	102	TRANSITION ALTITUDE 3000
TWR	119.805	EXETER TOWER	THR ELEVATION	102	
RAD	128.980, 123.580	EXETER RADAR	OBSTACLE ELEVATION	1527 AMSL (1425) (ABOVE THR)	
ATIS	119.330	EXETER INFORMATION	BEARINGS ARE MAGNETIC		



MAPt 3.1NM after NDB(L) EX
Climb straight ahead to **1100** then climbing turn right to **NDB(L) EX** at **2500** or as directed.



Aircraft Category		A	B	C	D	Rate of descent	G/S KT	160	140	120	100	80
OCA (OCH)	NO DME	890(788)	890(788)	890(788)	890(788)		FT/MIN	990	870	740	620	500
VM(C)OCA (OCH AAL)	Total Area	890(788)	900(798)	1090(988)	1090(988)	NDB(L) to MAPt (3.1NM)	MIN:SEC	1:09	1:19	1:33	1:51	2:19

- NOTE 1** FAT offset 0.4° from RWY 26 C/L.
2 Lowest altitude to commence procedure from hold after a missed approach is **2500**.
3 ATC will normally require aircraft to hold not lower than **3500**.

CHANGE (11/23): VM(C)OCA(OCH AAL) CAT B.